

F M D I P O L E A N T E N N A S

Mod. PLS 1 – DIP 11 – DIP 15

There are a very strong wide band antennas, designed specially for arrays composed of many elements.

The dipole is made of stainless steel, ensuring high corrosion resistance.

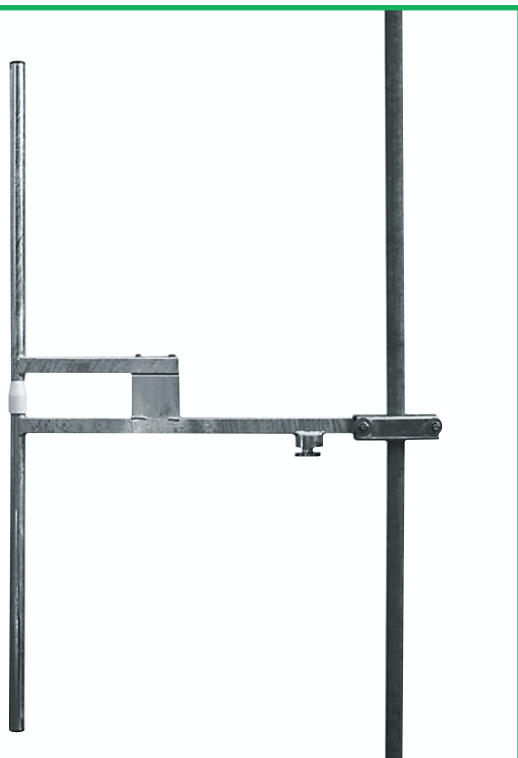
A heavy internal ground across the feed line protects against lightning damage.

The internal lines and the PTFE insulator assure reliability for power

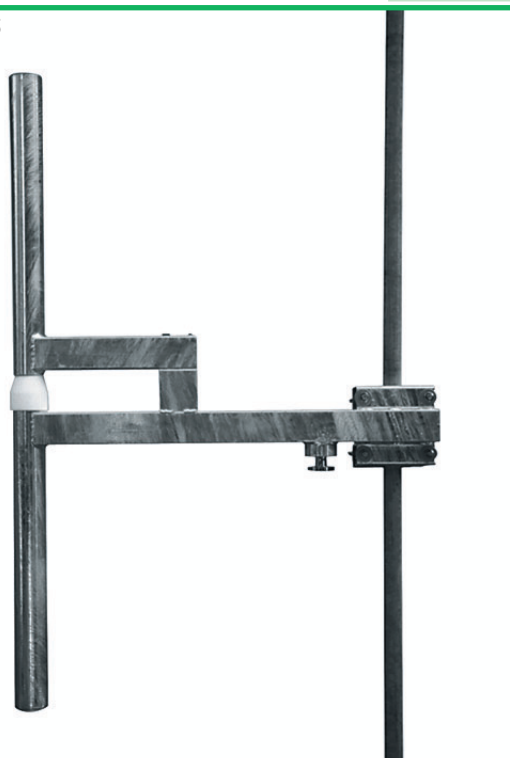
ratings up to 1500 W on the DIP 11 and up to 5000 W on the DIP 15.

The dipole PLS 1 is a good economic solution. Complete factory testing is carried out on each dipole to achieve the stated performance and peak efficiency.

Mod. DIP 11



Mod. DIP 15



F033.01	PLS1
F204	DIP11/N
F204.01	DIP11/16
F204.02	DIP11/F
F202.01	DIP15/16
F202	DIP15/F

Aluminium Dipole, 600W Power rate
Galvanized steel Dipole, 600W Power rate
Galvanized steel Dipole, 1.5KW Power rate
Galvanized steel Dipole, 1.5KW Power rate
Galvanized steel Dipole, 2KW Power rate
Galvanized steel Dipole, 5KW Power rate

Technical data FM Dipole Antennas

ELECTRICAL AND MECHANICAL DATA

	Dipole PLS 11	Dipole DIP 11	Dipole DIP 15
TYPE	Dipole PLS 11	Dipole DIP 11	Dipole DIP 15
FREQUENCY RANGE	87,5 □ 108 MHz		
INPUT CONNECTOR	N	N - 7/16 - 7/8"	7/16 - 7/8"
BANDWIDTH	87,5 □ 108 MHz		
IMPEDANCE	50 Ω		
POWER RATING	500 W	1500 W	5000 W
SWR	≤ 1.4:1		
POLARIZATION	Vertical		
GAIN	2 dB (Referred to Half - Wave Dipole)		
H PLANE	180°		
V PLANE	78°		
LIGHTNING PROTECTION	All metal parts are DC Grounded		
MAX WIND VELOCITY	150 Km/h		
WIND LOAD (With speed at 150 Km/h)	10 Kgs.	18 Kgs.	25 Kgs.
WIND SURFACE	0,11 SQM.	0,11 SQM	0,18 SQM

MATERIALS

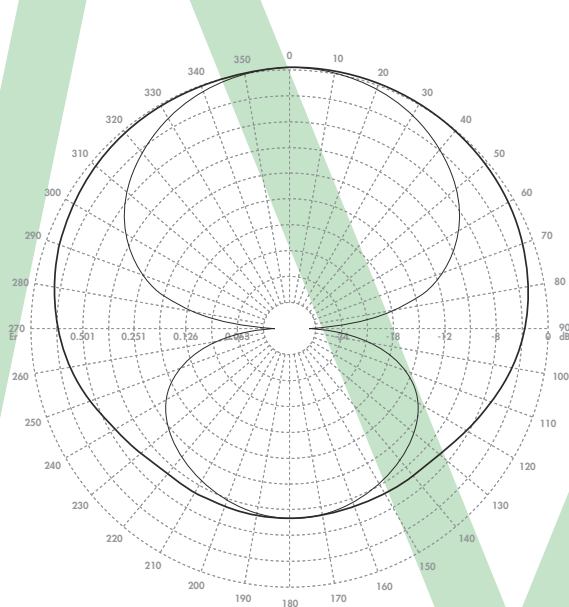
INTERNAL PARTS	Silver-plated brass and PTFE		
EXTERNAL PARTS	Aluminium	Hot Galvanized steel	Hot Galvanized steel
EXTERNAL INSULATOR	PVC	PTFE	PTFE
BRACKETS	Hot Galvanized steel		
BOLTS AND SCREWS	Galvanized steel		
CONNECTORS RUBBERCASING	No	Yes	Yes
MOUNTING	From 60 to 120 mm. Ø.		
WEIGHT	4 Kg.	7 Kg.	16 Kg.
DIMENSION (cm.)	140x85x6	140 x 88 x 6	134x91x10
PACKING (cm.)	145x90x10	145 x 90 x 10	140x95x15

Dipole Antennas

N° BAYS	DB GAIN	POWER GAIN	ANTENNA APERTURE (mt.)				WIND LOAD (v = 150 Km/h)		
			PLS 1	DIP 11	DIP 15	PLS 1	DIP 11	DIP 15	
1	2	1,58	1,4	4	7	16	10	18	25
2	5	3,16	4,1	8	14	32	20	36	50
4	8	6,3	9,5	16	28	64	40	72	100
6	9,8	9,5	14,9	24	42	96	60	108	150
8	11	12,6	20,3	32	56	128	80	144	200

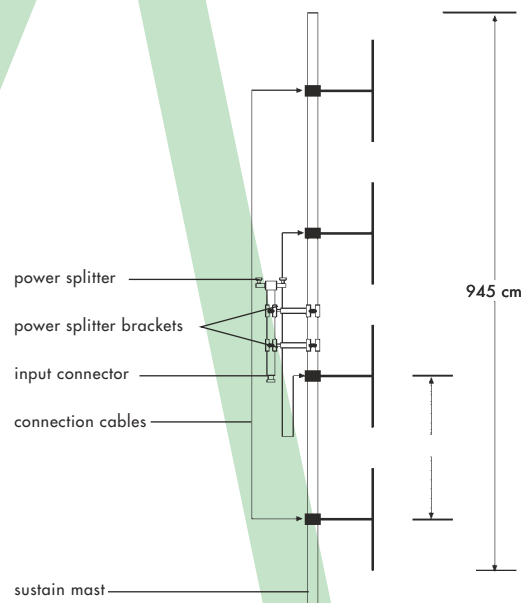
Radiation Pattern

— H Plane ···· VPlane



Stacked Array

Stacked-Array Antenna System composed of 4 Dipoles



Specifications and characteristics are subject to change without notice.